

QUICK GUIDE ON THE CIRCULATION OF LIBRARY RESOURCES



Collection	Rule				Penalties				
	20 DAYS	5 DAYS	OVERNIGHT	IN LIBRARY USE ONLY	IF RETURNED LATE		IF LOST	IF DESTROYED	IF MARKED
					2 PESO FINE/DAY	5 PESO FINE/HOUR	REPLACEMENT	50 PESO FINE	100 PESO FINE
GENERAL CIRCULATION BOOKS*	X				X		X	X	X
RESERVED BOOKS**			X			X	X	X	X
FILIPINIANA		X			X		X	X	X
GENERAL REFERENCES				X				X	X
THESIS AND DISSERTATIONS				X				X	X
SERIALS (JOURNALS, NEWSPAPERS)				X				X	X
CE MATERIALS				X				X	X

* You can check out maximum of 15 books
 ** Can be checked out on the last hour of library opening hours and shall be returned on the first hour of the next opening day

STUDENT

GUIDE

TO

BISHOP FRANK MOSHER LIBRARY

Library Opening Hours:

Mondays to Fridays
7:30 A.M. - 5 P.M.
(Lunch break at 12 NN to 1 P.M.)

Mondays- Thursdays
7 P.M.-9 P.M.



Contact us:

Email: mosherslibrary@yahoo.com

FB page: Bishop Frank Mosher Library

Tel. No.: 8-784-0339

LIBRARY

PURPOSE

MISSION

To support the instruction, research and ministerial programs of SATS by providing relevant, sufficient and organized theological information sources and services

OBJECTIVES

- Provide access to references which aid the areas of study at SATS;
 - 1.Sacred Scripture
 - 2.Christian Doctrine
 - 3.Christian Worship
 - 4.Ecclesiastical History
 - 5.Christian Ministry
- Provide access to journals relevant to the research needs of the faculty and students
- Select and provide quality theological information in collaboration with the faculty
- Provide readers services
- Promote information literacy

GENERAL RULES

Be silent at all times inside the library. Turn your gadgets into silent mode and minimize conversing in a loud voice.

Secure your valuables such as money, mobile phones, and other gadgets.

Avoid eating inside the library. You may bring your coffee and water but avoid spilling them on books and tables.

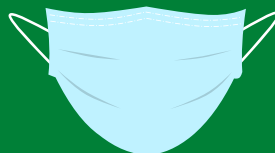
Do wear proper attire at all times inside the library. Avoid wearing shorts, sando, sleeveless, miniskirt and pajamas during your library hours.

Putting marks on books is not allowed (earmarks, pen marks, folds, etc.). Use bookmarks.

Thesis, dissertations, archives and old books (with sensitive binding and paper quality) are not allowed to be photocopied.

Library privileges may be suspended for students who fail to observe these rules.

ALWAYS MASK ON!



LIBRARY

RESOURCES

PRINT

General Circulation Books

Reference Section

Periodicals Section

Filipiniana Section

Thesis and Dissertation

Igorot Studies Collection

Bible Commentaries

ECP and IFI Archives

Multimedia Collection

Christian Education Materials

NON-PRINT

EBSCO (ATLASerials Database)

search.ebscohost.com

GLOBAL DIGITAL THEOLOGICAL LIBRARY (GDTL)

globaldtl.org

OTHER FREE ONLINE SOURCES

see sats.ph